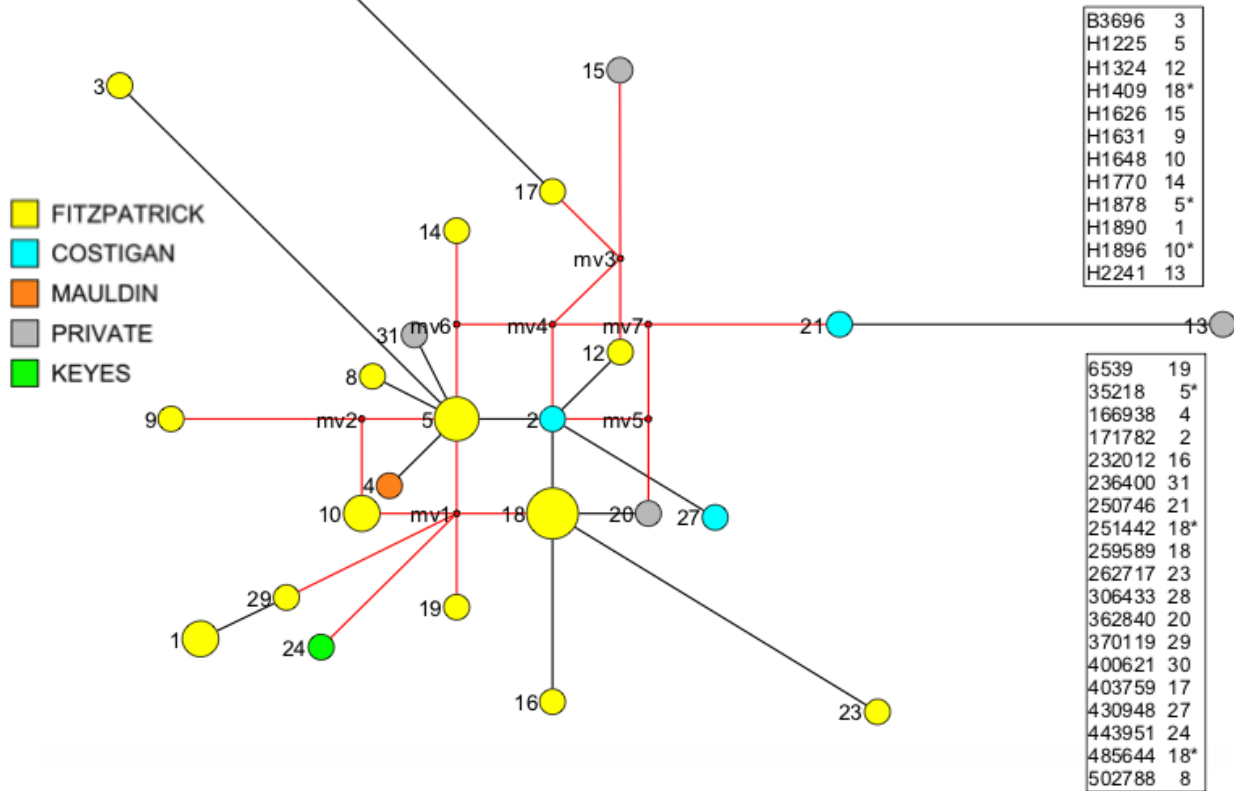


Laois Fitzpatrick Cladogram* v.LFP2a 20170404

*Median Joining Network unweighted, generated with Network 5.0.0.1 and Network Publisher 2.1.1.2
see <http://www.fluxus-engineering.com>

31 YSTR haplotypes with 33 FTDNA loci; DYS 389i/ii and CDYa/b excluded from 37 marker panel.
Median Vector nodes (mv1-7) and their respective links shown in red.



This PDF Presentation copyright Seamas Brennan 25 April 2017.

References

Software website: fluxus-engineering.com.

Software: Network 5.0.0.1 (20161223).

Network © Copyright Fluxus Technology Ltd 1999-2017.

Bandelt et al. (1995) when using RM, or

Bandelt et al. (1999) when using MJ, and

Forster et al. (2001) when using star contraction, and

Polzin et al. (2003) when using MP.

The rho statistic for time estimates was used first (to our knowledge) by Morral et al. (1994) under a different name, and then explored by Forster et al. (1996).

The calculation of standard errors for rho (taking into account the branching structure of the tree) was presented by Saillard et al. (2000).

Bandelt H-J, Forster P, Sykes BC, Richards MB (1995) Mitochondrial portraits of human populations. *Genetics* 141:743-753.

Forster P, Harding R, Torroni A, Bandelt H-J (1996) Origin and Evolution of Native American mtDNA Variation: A reappraisal. *American Journal of Human Genetics* 59:935-945.

Bandelt H-J, Forster P, Röhl A (1999) Median-joining networks for inferring intraspecific phylogenies. *Mol Biol Evol* 16:37-48.

Forster P, Röhl A, Lünemann P, Brinkmann C, Zerjal T, Tyler-Smith C, Brinkmann B (2000) A Short Tandem Repeat-Based Phylogeny for the Human Y Chromosome. [Am. J. Hum. Genet., 67:182-196.](#)

Saillard J, Forster P, Lynnerup N, Bandelt H-J, Nørby S (2000) mtDNA variation among Greenland Eskimos: the edge of the Beringian expansion. [Am J Hum Genet 67:718-726.](#)

Forster P, Torroni A, Renfrew C, Röhl A (2001) Phylogenetic star contraction applied to Asian and Papuan mtDNA evolution. [Mol Biol Evol 18:1864-1881.](#)

Polzin T, Daneschmand S V (2003) On Steiner trees and minimum spanning trees in hypergraphs. *Operations Research Letters* 31:12-20.